

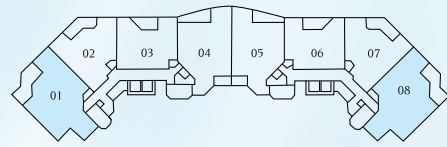


# TOWER POINTE

AT ARBOR TRACE



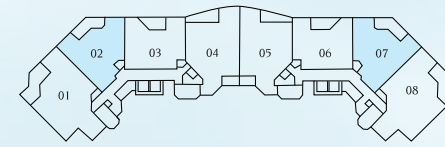




## Residence 01/08

3 Bedroom, 2.5 Bath  
Great Room & Morning Room

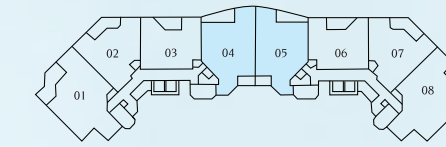
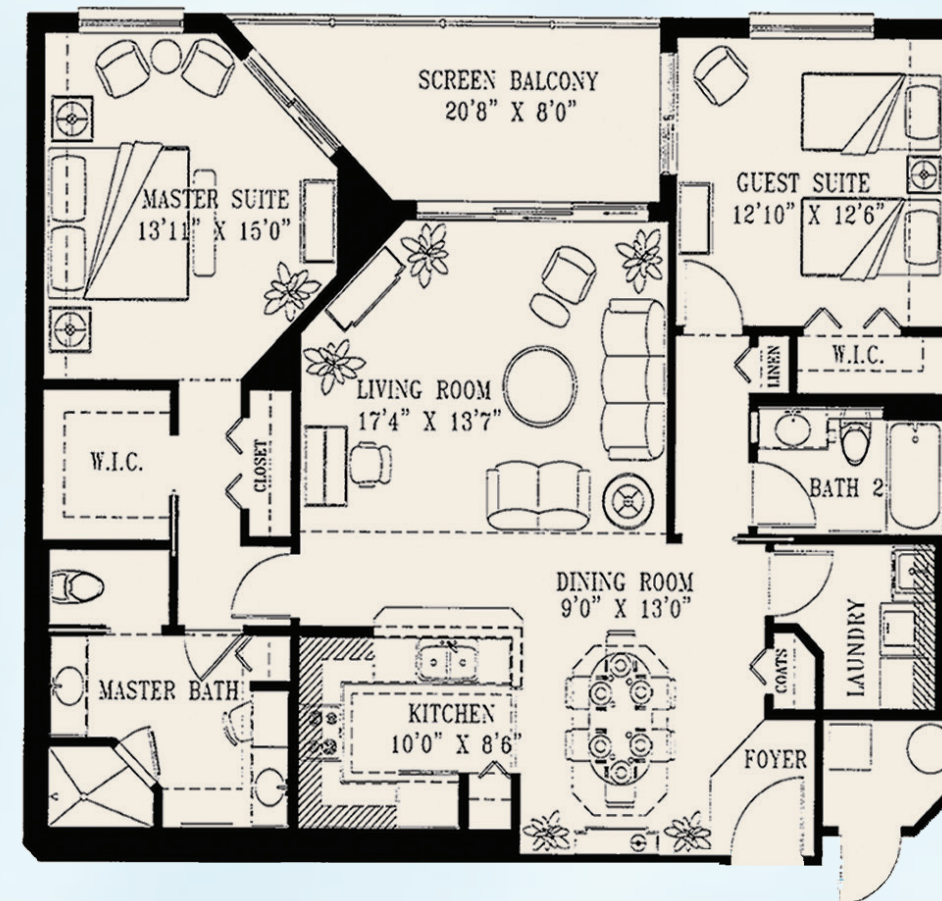
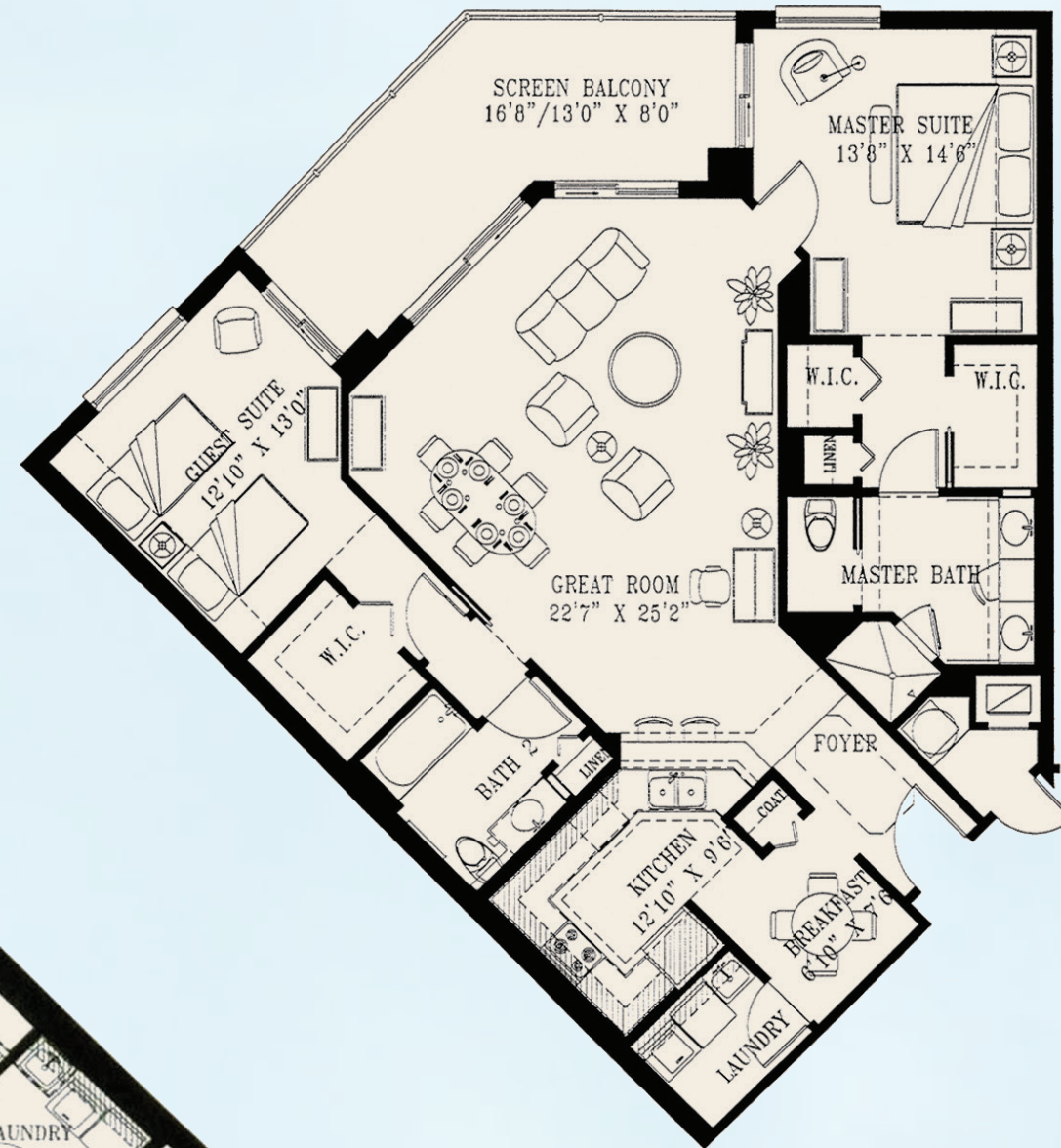
Air-conditioned Space	2,030 sq. ft.
Balcony	285 sq. ft.
<b>TOTAL</b>	<b>2,315 sq. ft.</b>



## Residence 02/07

2 Bedroom, 2 Bath  
Great Room & Morning Room

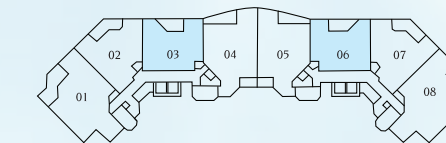
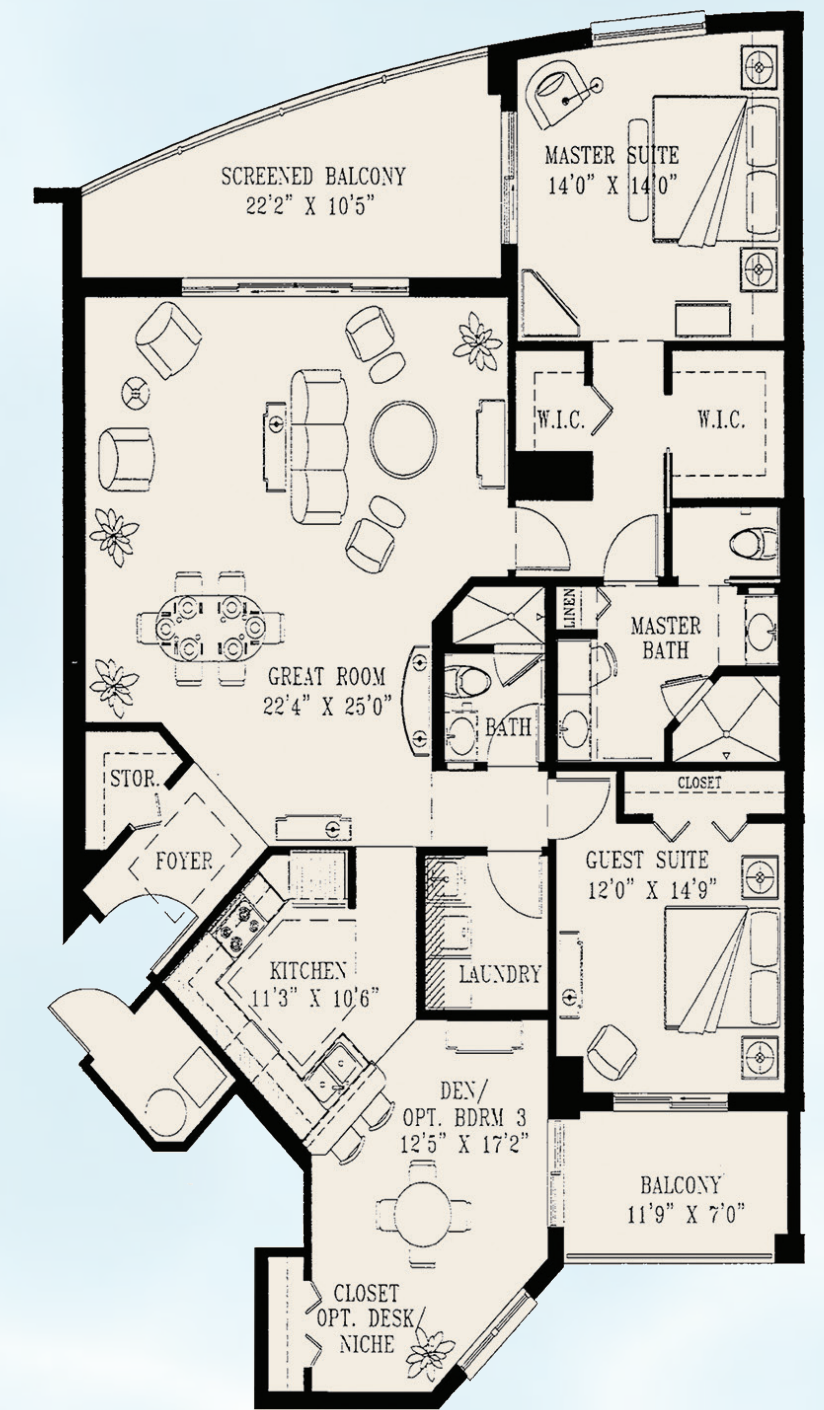
Air-conditioned Space	1,550 sq. ft.
Balcony	202 sq. ft.
<b>TOTAL</b>	<b>1,752 sq. ft.</b>



## Residence 04/05

2 Bedroom plus Den,  
2 Bath & Great Room

Air-conditioned Space	1,790 sq. ft.
Balcony	258 sq. ft.
<b>TOTAL</b>	<b>2,048 sq. ft.</b>

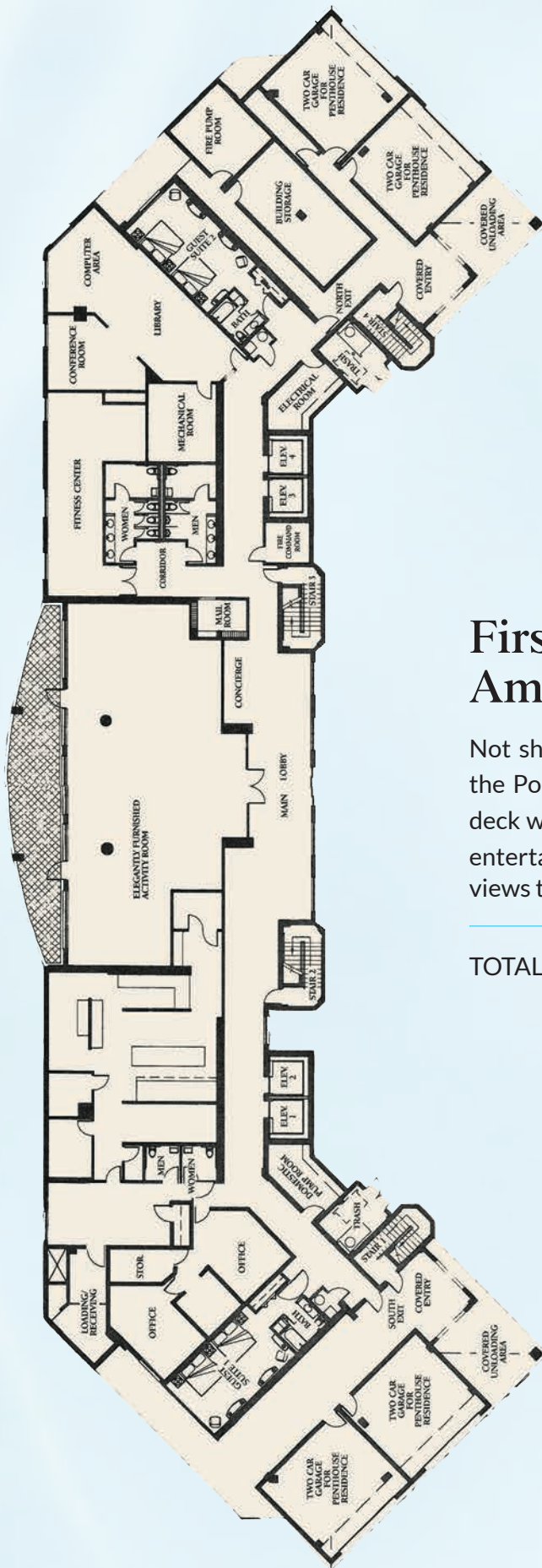


## Residence 03/06

2 Bedroom, 2 Bath  
Living Room & Dining Room

Air-conditioned Space	1,481 sq. ft.
Balcony	133 sq. ft.
<b>TOTAL</b>	<b>1,614 sq. ft.</b>





## First Floor Amenities Plan

Not shown, 17th level (top floor) top of the Pointe Club lounge and observation deck with complete catering kitchen and entertainment facilities and panoramic views toward the Gulf of Mexico.

TOTAL 21,200 sq. ft.



**TOWER POINTE**  
AT ARBOR TRACE

1000 Arbor Lake Drive | Naples, FL 34110  
239.598.2929 | [ArborTrace.com](http://ArborTrace.com)

Assisted Living Facility License #7793



All dimensions are approximate. Specifications subject to change without notice. ORAL REPRESENTATIONS CANNOT BE RELIED UPON AS CORRECTLY STATING REPRESENTATIONS OF THE DEVELOPER. FOR CORRECT REPRESENTATIONS MAKE REFERENCE TO THE INFORMATION CONTAINED HERE IN AND THE DOCUMENTS REQUIRED BY SECTION 718.503, FLORIDA STATUTES, TO BE FURNISHED BY A DEVELOPER TO A BUYER OR LESSEE.