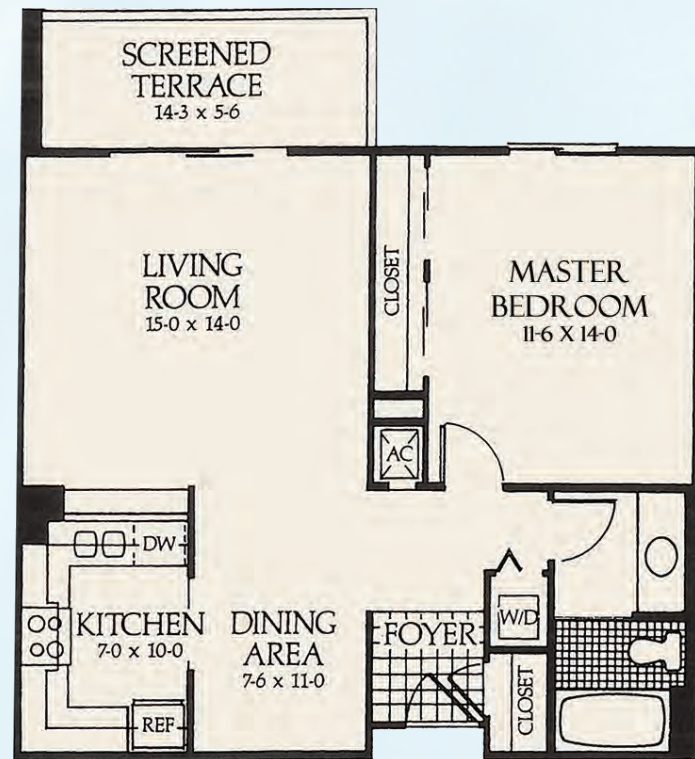




ARBOR TRACE

MIDRISES & VILLAS

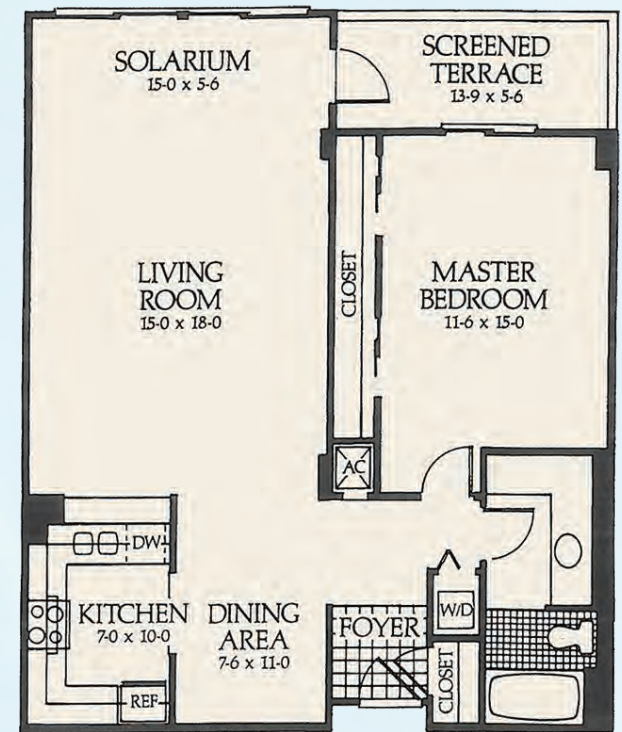




The Pine (A)

Mid-Rise Residence
1 Bedroom, 1 Bath

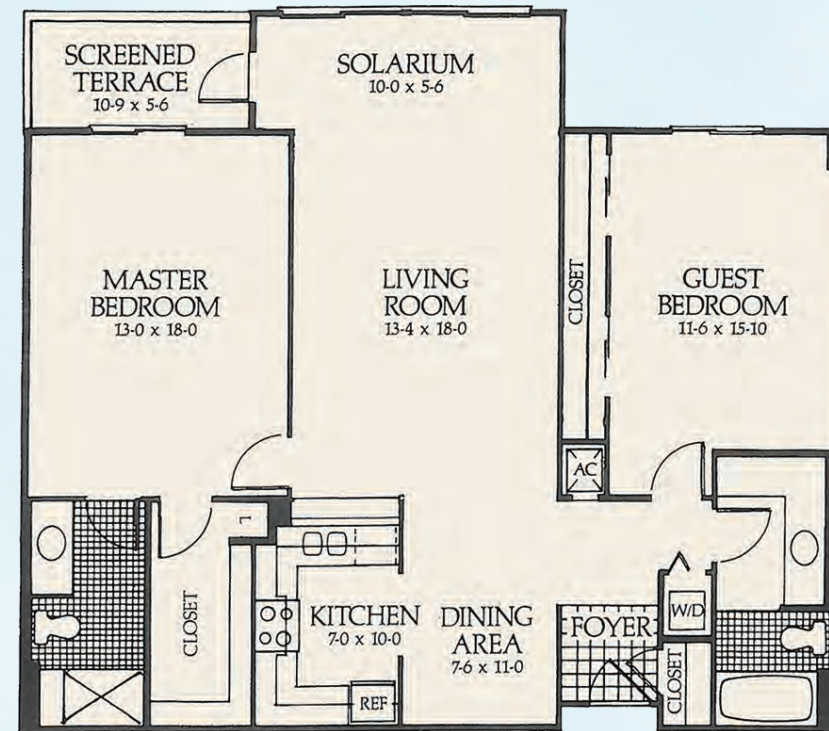
Air-conditioned Space	788 sq. ft.
Screened Terrace	78 sq. ft.
TOTAL	866 sq. ft.



The Mango (B)

Mid-Rise Residence
Deluxe 1 Bedroom, 1 Bath

Air-conditioned Space	1,004 sq. ft.
Screened Terrace	76 sq. ft.
TOTAL	1,080 sq. ft.



The Jacaranda (C)

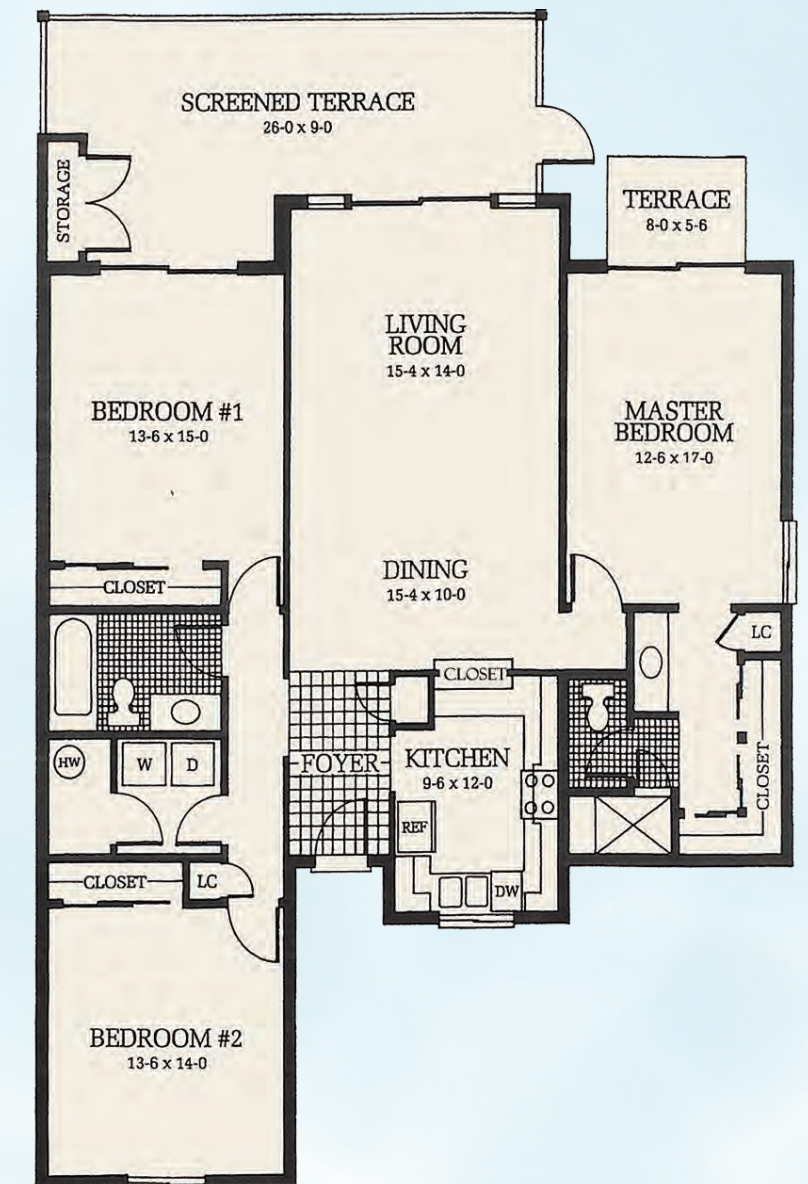
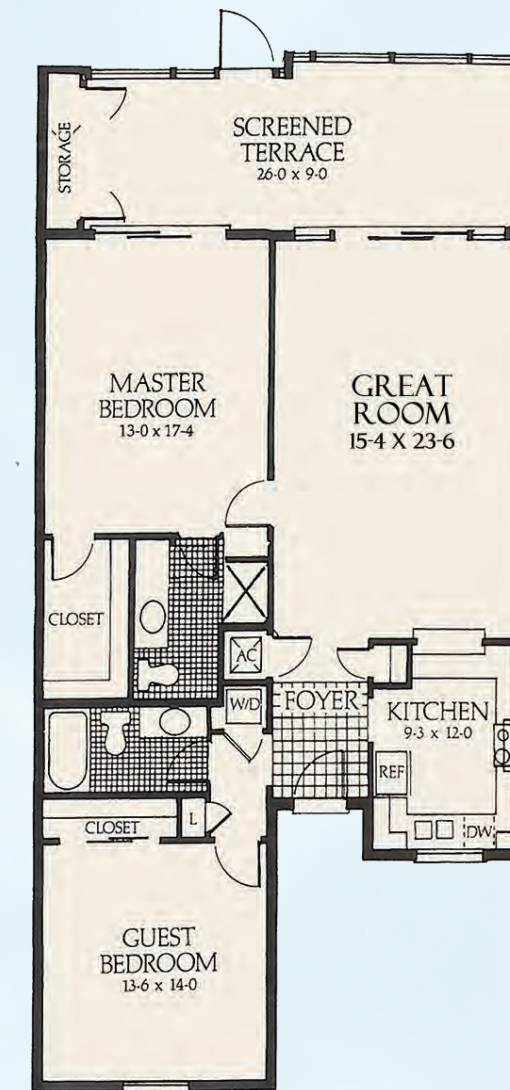
Mid-Rise Residence
2 Bedroom, 2 Bath

Air-conditioned Space	1,350 sq. ft.
Screened Terrace	60 sq. ft.
TOTAL	1,410 sq. ft.

The Cypress (D)

Villa Residence
2 Bedroom, 2 Bath

Air-conditioned Space	1,804 sq. ft.
Screened Terrace	152 sq. ft.
TOTAL	1,956 sq. ft.



The Palm (E)

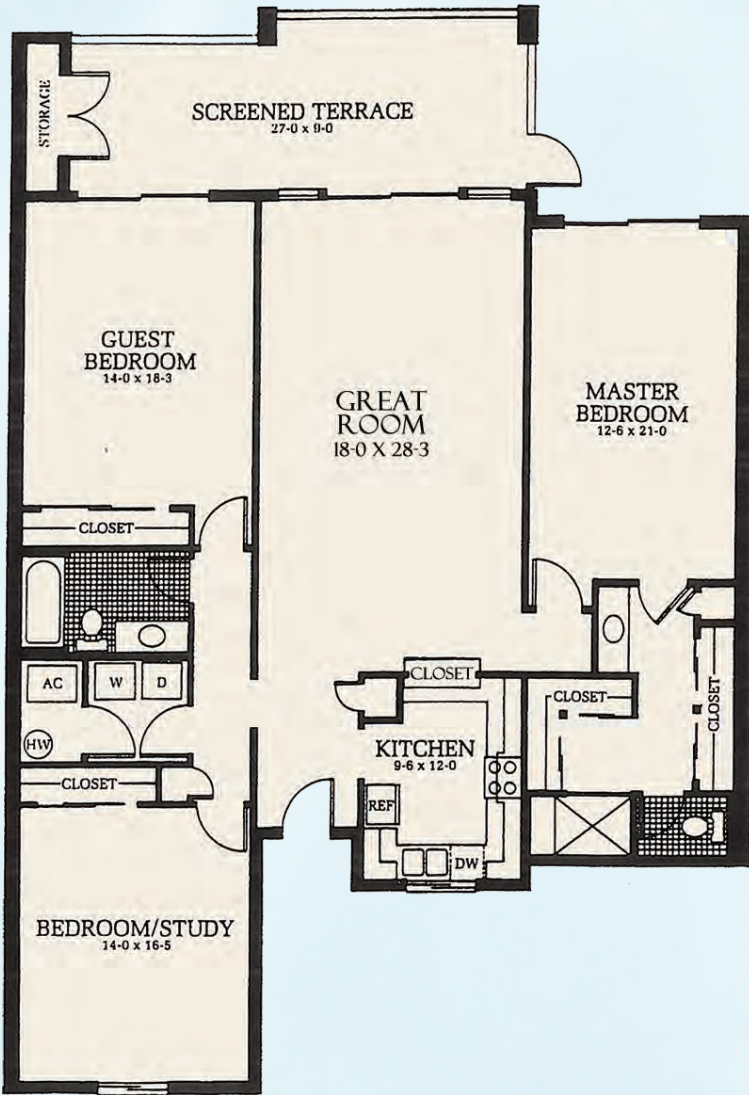
Villa Residence
3 Bedroom, 2 Bath

Air-conditioned Space	1,790 sq. ft.
Balcony	258 sq. ft.
TOTAL	2,048 sq. ft.

The Oak (G)

Villa Residence
3 Bedroom, 2 Bath

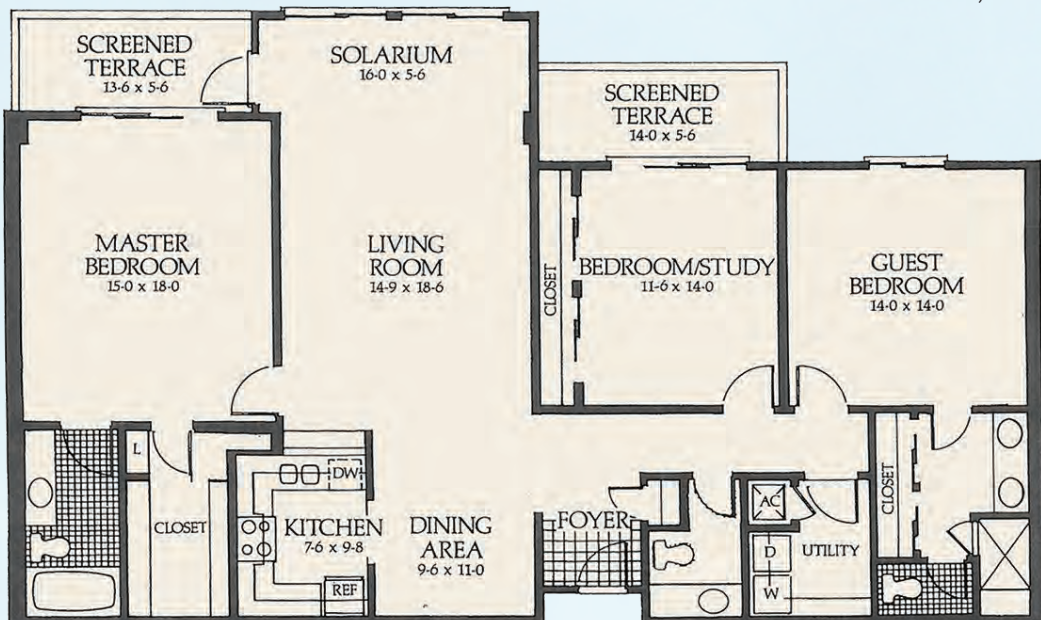
Air-conditioned Space	1,790 sq. ft.
Balcony	258 sq. ft.
TOTAL	2,048 sq. ft.



The Banyan (F)

Mid-Rise Residence
3 Bedroom, 2.5 Bath

Air-conditioned Space	1,790 sq. ft.
Balcony	258 sq. ft.
TOTAL	2,048 sq. ft.





ARBOR TRACE

MIDRISES & VILLAS

1000 Arbor Lake Drive | Naples, FL 34110
239.598.2929 | ArborTrace.com

Assisted Living Facility License #7793



All dimensions are approximate. Specifications subject to change without notice. ORAL REPRESENTATIONS CANNOT BE RELIED UPON AS CORRECTLY STATING REPRESENTATIONS OF THE DEVELOPER. FOR CORRECT REPRESENTATIONS MAKE REFERENCE TO THE INFORMATION CONTAINED HERE IN AND THE DOCUMENTS REQUIRED BY SECTION 718.503, FLORIDA STATUTES, TO BE FURNISHED BY A DEVELOPER TO A BUYER OR LESSEE.